

Lumby Village

1	General
<p>Incorporated in 1955, Lumby has a total land area of 5.27 square km (2006 Census). By highway the Village is 26 km east of Vernon and 167 km west of Nakusp. Lumby is in the North Okanagan Regional District.</p>	

2	Population Estimates				Age Distribution				
Annual Estimates					2011 Census			% Distribution, 2011 *	
Year	Lumby	% Change Prev. Year	BC	% Change Prev. Year	Lumby	Male	Female	Lumby	BC
2007	1,710	n/a	4,309,632	n/a	All ages	865	865	100.0	100.0
2008	1,754	2.6	4,384,047	1.7	0 - 14	165	160	18.8	15.4
2009	1,806	3.0	4,459,947	1.7	15 - 24	90	85	10.4	12.6
2010	1,815	0.5	4,529,647	1.6	25 - 44	200	205	23.7	26.3
2011	1,863	2.6	4,573,321	1.0	45 - 64	230	245	27.7	30.0
					65 +	175	170	19.9	15.7

Source: Statistics Canada (as of July 1, includes estimate of Census undercount)

* based on published totals, both sexes

2006 Census Profiles can be found on our Website at <http://www.bcstats.gov.bc.ca/census.asp>

3	Selected Census Characteristics						
			Lumby			British Columbia	
Characteristics	2001	2006	% Change	% Change	2001	2006	
Population	1,618	1,634	1.0	5.3	3,907,738	4,113,487	
Population (by citizenship)	1,620	1,630	0.6	5.3	3,868,875	4,074,385	
Non-immigrant	1,515	1,535	1.3	2.9	2,821,870	2,904,240	
Immigrant	105	100	- 4.8	10.8	1,009,820	1,119,215	
Labour force (15+ yrs.)	650	820	26.2	8.1	2,059,950	2,226,380	
Employees	510	715	40.2	9.2	1,715,600	1,873,050	
Self-employed	80	100	25.0	7.4	291,455	313,000	
Participation rate [ppt.=percentage points]	50.6%	60.3%	9.7 ppt.	0.4 ppt.	65.2%	65.6%	
Unemployment rate	26.2%	9.8%	-16.4 ppt.	-2.5 ppt.	8.5%	6.0%	
Total population 25 to 64 years	815	925	13.5	6.5	2,144,050	2,284,465	
No certificate, diploma or degree	315	160	- 49.2	- 40.1	471,470	282,200	
High school certificate or equivalent	165	350	112.1	27.7	462,925	591,275	
Apprenticeship/trades certificate or diploma	180	175	- 2.8	- 7.4	295,180	273,450	
College, CEGEP or other cert. or diploma	125	150	20.0	11.3	401,760	447,005	
University certificate, diploma or degree	35	85	142.9	34.7	512,715	690,535	
Bachelor's degree	10	65	550.0	23.0	282,800	347,715	
Census families	475	515	8.4	6.9	1,086,030	1,161,420	
Lone-parent families	115	100	- 13.0	4.0	168,420	175,165	
Households	665	680	2.3	7.1	1,534,335	1,643,150	
1-family households	475	485	2.1	6.1	1,012,925	1,074,850	
Multi-family households	-	15	-	18.4	35,050	41,510	
Non-family households	190	180	- 5.3	8.3	486,355	526,785	
Median Income (2000 & 2005)	\$ 18,356	\$ 20,111	9.6	12.5	\$ 22,095	\$ 24,867	
Males	\$ 32,636	\$ 27,533	- 15.6	9.0	\$ 28,976	\$ 31,598	
Females	\$ 12,065	\$ 15,850	31.4	14.0	\$ 17,546	\$ 19,997	
Median Family Income (2000 & 2005)	\$ 44,295	\$ 52,803	19.2	20.0	\$ 54,840	\$ 65,787	
Economic Families	475	500	5.3	6.5	1,044,850	1,112,810	
2001 Incidence, low income 2006 Prevalence, low income	11.9%	16.0%	4.1 ppt.	-0.6 ppt.	13.9%	13.3%	
Unattached persons, 15+	220	235	6.8	4.7	576,825	603,880	
Incidence, low income	37.0%	42.6%	5.6 ppt.	-1.4 ppt.	38.1%	36.7%	
Population in private hh.	1,615	1,625	0.6	5.1	3,785,270	3,978,215	
Incidence, low income	13.7%	21.8%	8.1 ppt.	-0.5 ppt.	17.8%	17.3%	
Dwellings	660	680	3.0	7.1	1,534,335	1,643,150	
Owned	475	505	6.3	12.5	1,017,485	1,145,045	
Rented	190	175	- 7.9	- 3.6	512,360	493,995	
Average gross rent	\$ 551	\$ 550	- 0.2	10.4	\$ 750	\$ 828	
Average owners' payments	\$ 661	\$ 842	27.4	17.1	\$ 904	\$ 1,059	
Avg. value, owned dwell.	\$ 112,342	\$ 226,407	101.5	81.5	\$ 230,645	\$ 418,703	

Source: Statistics Canada. Notes: incomes are for 2005 and 2000; rent/owner's payments are restricted to non-farm, non-reserve private dwellings.

Lumby Village

4		Labour Force by Industry (NAICS)					
		Lumby			BC	% Distribution, 2006	
Industry		2001	2006	% Change	% change	Lumby	BC
Total labour force		650	820	26.2	8.1	100.0	100.0
Industry - Not applicable		55	10	- 81.8	- 26.6	1.2	1.5
All industries (Experienced LF)		600	810	35.0	8.9	98.8	98.5
111-112 Farms		-	10	-	5.2	1.2	1.8
113 Forestry and logging		65	55	- 15.4	- 10.0	6.7	1.0
114 Fishing, hunting and trapping		-	-	-	1.3	-	0.2
1151/2 Support activities for farms		-	-	-	11.3	-	0.1
1153 Support activities for forestry		15	10	- 33.3	- 21.5	1.2	0.3
21 Mining and oil and gas extraction		10	-	- 100.0	42.6	-	0.9
22 Utilities		-	10	-	- 3.4	1.2	0.5
23 Construction		40	90	125.0	39.9	11.0	7.5
31-33 Manufacturing		145	125	- 13.8	- 2.7	15.2	8.5
311 Food manufacturing		20	15	- 25.0	3.6	1.8	1.0
321 Wood product manufacturing		65	45	- 30.8	- 16.1	5.5	1.7
322 Paper manufacturing		-	10	-	- 13.5	1.2	0.6
41 Wholesale trade		40	35	- 12.5	11.6	4.3	4.1
44-45 Retail trade		55	80	45.5	6.9	9.8	11.2
441 Motor vehicle and parts dealers		-	10	-	9.0	1.2	1.1
445 Food and beverage stores		30	25	- 16.7	8.4	3.0	2.9
448 Clothing & clothing accessories		-	10	-	9.2	1.2	1.1
452 General merchandise stores		10	10	-	6.5	1.2	1.2
48-49 Transportation & warehousing		45	30	- 33.3	0.6	3.7	5.2
51 Information and cultural industries		-	-	-	- 5.3	-	2.6
52 Finance and insurance		15	40	166.7	4.5	4.9	3.8
53 Real estate & rental/leasing		-	15	-	22.1	1.8	2.3
54 Prof'sonal, scientific & tech. serv.		-	20	-	18.6	2.4	7.3
55 Mgmt. of companies/ent'prises		-	-	-	126.6	-	0.1
56 Admin+support, waste mgmnt srv.		-	60	-	20.4	7.3	4.4
61 Educational services		30	40	33.3	9.2	4.9	6.9
62 Health care and social assistance		50	70	40.0	6.5	8.5	9.6
71 Arts, entertainment and recreation		15	10	- 33.3	11.3	1.2	2.3
72 Accommodation and food services		15	70	366.7	7.7	8.5	8.1
721 Accommodation services		10	15	50.0	2.5	1.8	1.7
722 Food services & drinking places		15	60	300.0	9.2	7.3	6.4
81 Other services (excl. public admin.)		40	25	- 37.5	11.8	3.0	4.9
91 Public administration		-	-	-	- 2.0	-	5.0
Special Aggregations	Agriculture, Food and Beverage	20	20	-	5.8	2.4	2.9
	Fishing and Fish Processing	-	-	-	- 3.3	-	0.5
	Logging and Forest Products	150	115	- 23.3	- 14.7	14.0	3.7
	Mining and Mineral Products	50	25	- 50.0	17.1	3.0	2.1

Source: Statistics Canada. Industry according to NAICS version used in each census. Unpublished data.

5		Business Locations- Number of Firms by Employment Size Range								
		Firms with no employees		Firms with employees		% change	Vernon CA			
		Vernon CA	BC	Vernon CA	BC	Vernon CA	1 to 19	20 to 49	50-199	200 Plus
2008		2,455	185,879	2,501	175,003	-	2,240	163	87	11
2009		2,510	186,541	2,508	176,124	0.3	2,243	169	85	11
2010		2,611	194,349	2,468	175,913	- 1.6	2,199	180	78	11
2011		2,587	195,290	2,464	173,589	- 0.2	2,215	168	70	11

Source: Business Register, Statistics Canada. In some areas, boundary changes/geocoding changes may cause large changes.

6		Municipal Residential Taxes and Charges on a Representative House					
		Lumby					
		House Value		Taxes & Charges			
Year	\$	% change	\$	% change			
2008	250,919		2,301				
2009	255,969	2.0	2,442	6.1			
2010	251,951	-1.6	2,500	2.4			
2011	250,408	-0.6	2,650	6.0			
2012	235,516	-5.9	2,692	1.6			

Year	House Value	Taxes & Charges
2008	100	100
2009	102	106
2010	101	110
2011	100	117
2012	94	117

Source: Ministry of Community, Sport & Cultural Development http://www.cd.gov.bc.ca/lgd/infra/statistics_index.htm (No RD level figures)

Lumby Village

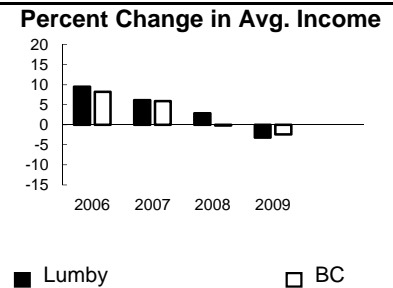
7	Values of Building Permits								
	Residential				Non-Residential		Total		Year
	Number of Units		Value \$'000		Value \$'000		Value \$'000		
Lumby	BC	Lumby	BC	Lumby	BC	Lumby	BC		
2007	23	40,932	4,550	8,611,723	55	3,932,968	4,605	12,544,691	2007
2008	17	30,110	3,921	6,899,289	796	3,677,866	4,717	10,577,155	2008
2009	4	18,607	1,148	4,491,075	994	3,138,810	2,142	7,629,885	2009
2010	12	28,984	3,013	6,705,888	1,010	3,017,921	4,023	9,723,809	2010
2011	-	25,745	295	6,113,406	170	3,136,361	465	9,249,767	2011

Source: Statistics Canada

Note: Detailed non-residential permits data can be found on our Website: www.bcstats.gov.bc.ca

A dash can indicate a nil report, a value of less than \$500, or non-reporting. P indicates 'preliminary'.

8	Personal Taxation Statistics					Percent Change in Avg. Income	
	Total Income of All Returns						
	All Returns (number)		Average Income (\$)		% Change avg. income		
Year	Lumby	BC	Lumby	BC	Lumby	BC	
2005	3,720	3,154,090	25,462	35,601	n/a	n/a	
2006	3,720	3,165,750	27,875	38,523	9.5	8.2	
2007	3,860	3,287,750	29,591	40,802	6.2	5.9	
2008	3,840	3,383,640	30,441	40,736	2.9	-0.2	
2009	3,850	3,406,860	29,465	39,754	-3.2	-2.4	



Taxation data available at: <http://www.bcstats.gov.bc.ca/data/dd/income.asp>

9	Source of Total Income 2009			% Distribution, Total Income					
	Lumby		BC						
	\$Thousands	% of Total	% of Total						
Employment	66,772	58.9	63.7						
Pension	20,561	18.1	13.8						
Investment	6,578	5.8	9.8						
Self-Employed	4,531	4.0	5.3						
Other	10,557	9.3	5.3						
Tax Exempt	4,421	3.9	2.0						
Total	113,439	100.0	100.0						

Source: Canada Revenue Agency. Areas are defined by postal codes and may not match municipal boundaries.

9	Dependency on the Safety Net						Total Beneficiaries by Age Group, % (Basic BC Assistance & EI)		
	Percentage of Population by Age Receiving Benefits - September 2009								
	Age Group	BC Basic* Income Assistance Recipients (%)		Employment Insurance Beneficiaries (%)		Total of BC Basic Income Assistance & EI Beneficiaries (%)			
N Okanagan		BC	N Okanagan	BC	N Okanagan	BC			
Under 19	3.4	2.7							
19-24	3.4	2.1	4.9	2.6	8.1	4.6			
25-54	2.4	1.9	4.7	3.1	7.0	4.9			
55-64	0.7	0.7	2.2	2.0	2.9	2.6			
19-64	2.1	1.7	4.1	2.8	6.1	4.4			

* On temporary assistance only. Excluded are those on Continuous Assistance, aboriginals living on reserve, seniors/OAS, & children living with relatives.

Source: BC Stats (using administrative files from the BC Ministry of Housing & Social Development, and Human Resources & Social Development Canada)

Note: EI Beneficiaries reports now include regular, fishing and employment benefits, work sharing and support measures. The reports exclude sickness, maternity and parental benefits.

10	Business Formations and Failures								
	Incorporations			Bankruptcies					
	Number		Year	Vernon		Thompson/Okanagan DR		BC	
Lumby	BC	Business		Consumer	Business	Consumer	Business	Consumer	
2007	13	34,036	2005	17	120	n.a.	n.a.	786	8,168
2008	12	30,085	2006	20	93	120	913	585	7,020
2009	8	26,431	2007	10	107	97	874	470	6,651
2010	12	30,305	2008	14	119	92	1,014	454	7,293
2011	20	30,844	2009	5	181	66	1,573	380	10,639

Source: BC Ministry of Finance

Source: Office of the Superintendent of Bankruptcy, Government of Canada

Incorporations are counted in municipality of the registered office address which may differ from the actual business location.

Note: Bankruptcy is by urban postal code forward sortation area and is counted where it is filed.