

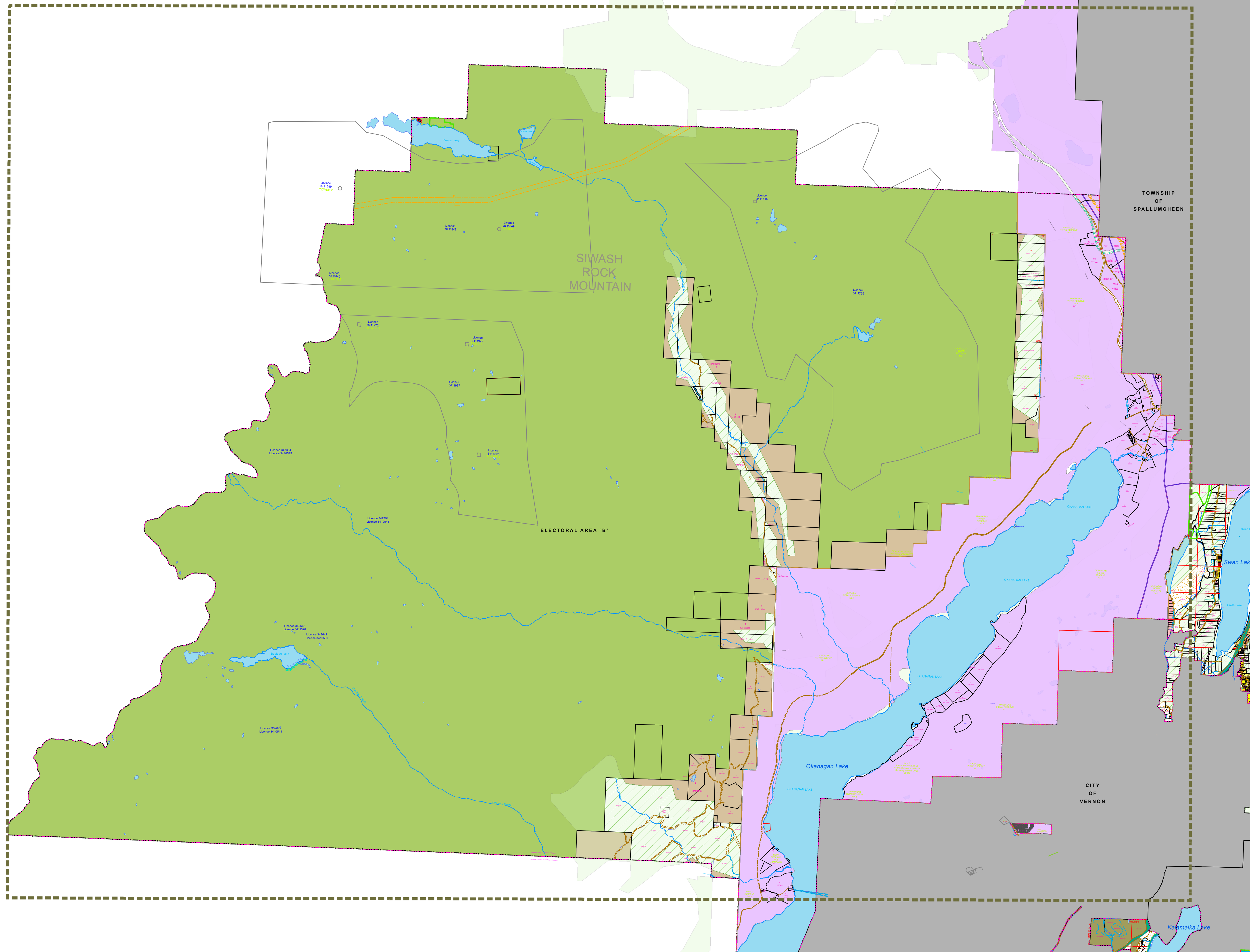
**ELECTORAL AREAS B & C
OFFICIAL COMMUNITY PLAN**

**Schedule B3 - Westside
General Land Use**

To Accompany Official Community
Plan Bylaw No. 2626, 2014.

LEGEND

- OCP Designations**
- Agricultural
 - Commercial
 - Country Residential
 - Future Residential
 - Industrial
 - Large Holding
 - Mixed Commercial / Light Industrial
 - Non Urban
 - Parks
 - Residential
 - School
 - Small Holding
 - Transportation Corridor
 - Resource Use
 - First Nations
 - ALR
 - Map Sheet Boundaries



Schedule "B" to accompany Regional District of North Okanagan "Electoral Areas "B" and "C" Official Community Plan Bylaw No. 2626, 2014"

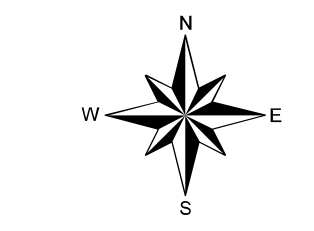
I hereby certify the foregoing to be a true and correct copy of Schedule "B" attached to and forming part of Bylaw No. 2626, 2014 cited as "Electoral Areas "B" and "C" Official Community Plan Bylaw No. 2626, 2014" as ADOPTED the Board of Directors on the 3rd day of September, 2014.

Dated at Coldstream, BC this 8th day of September, 2014.

Corporate Officer

Note:
The Agricultural Land Use Designation is generally consistent with ALR boundaries. As this is a representation of ALR designations, refer to the maps retained by the Agricultural Land Commission for exact boundaries.

Designations within the area of Schedule B1 / B2 / B3 shown on the Schedule B are for information only. Official designation for the areas of Schedule B1 / B2 / B3 are shown on those schedules.



1:50,000

