



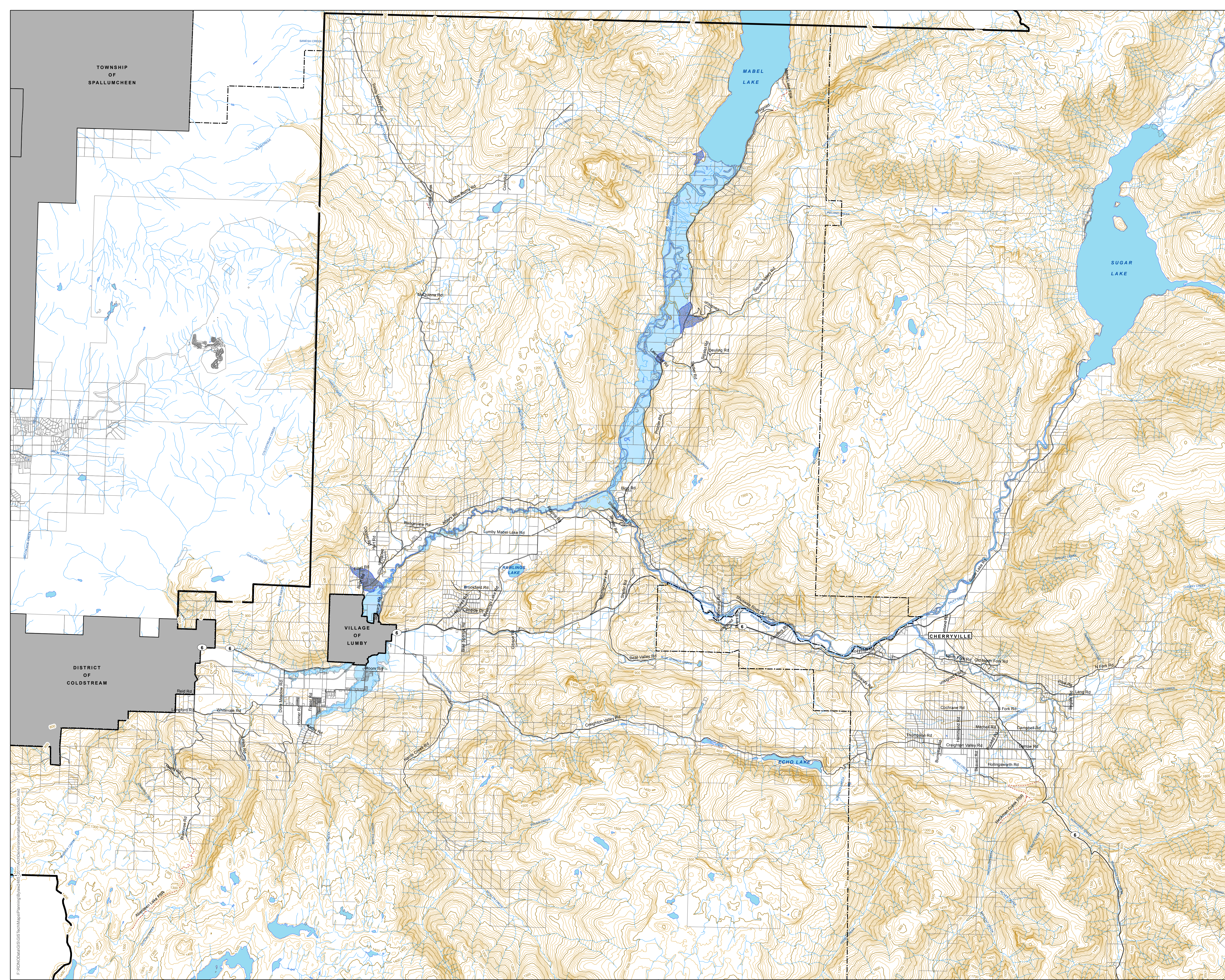
REGIONAL DISTRICT OF NORTH OKANAGAN

ELECTORAL AREAS D & E OFFICIAL COMMUNITY PLAN

Schedule D  
Environmentally Hazardous Areas  
To Accompany Official Community  
Plan Bylaw No. 2485, 2011.

LEGEND

- OCP Boundary
- Electoral Areas
- Municipalities
- Watercourses
- Alluvial Fans
- Floodplain

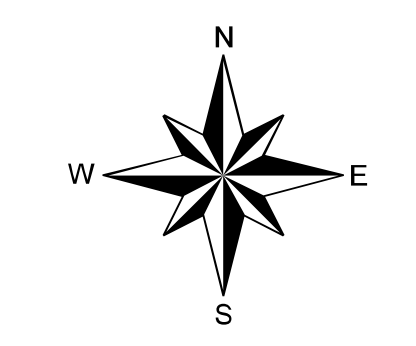


Schedule "D" to accompany Regional District of North Okanagan  
**"Electoral Areas "D" and "E" Official Community Plan Bylaw No. 2485, 2011"**

I hereby certify the foregoing to be a true and correct copy of Schedule "D" attached to and forming part of Bylaw No. 2485, 2011 cited as **"Electoral Areas "D" and "E" Official Community Plan Bylaw No. 2485, 2011"** as adopted by the Board of Directors on the 21st day of March, 2012.

Dated at Coldstream, BC this 26th day of March, 2012.

Corporate Officer



1:70,000 @ 24"x36"  
0 1,000 2,000 4,000 Meters