

REGIONAL DISTRICT OF
NORTH OKANAGAN

ELECTORAL AREA F
OFFICIAL COMMUNITY PLAN

Schedule F
Wildfire Hazard Development
Permit Area

To Accompany Official Community
Plan Bylaw No. 2702, 2016

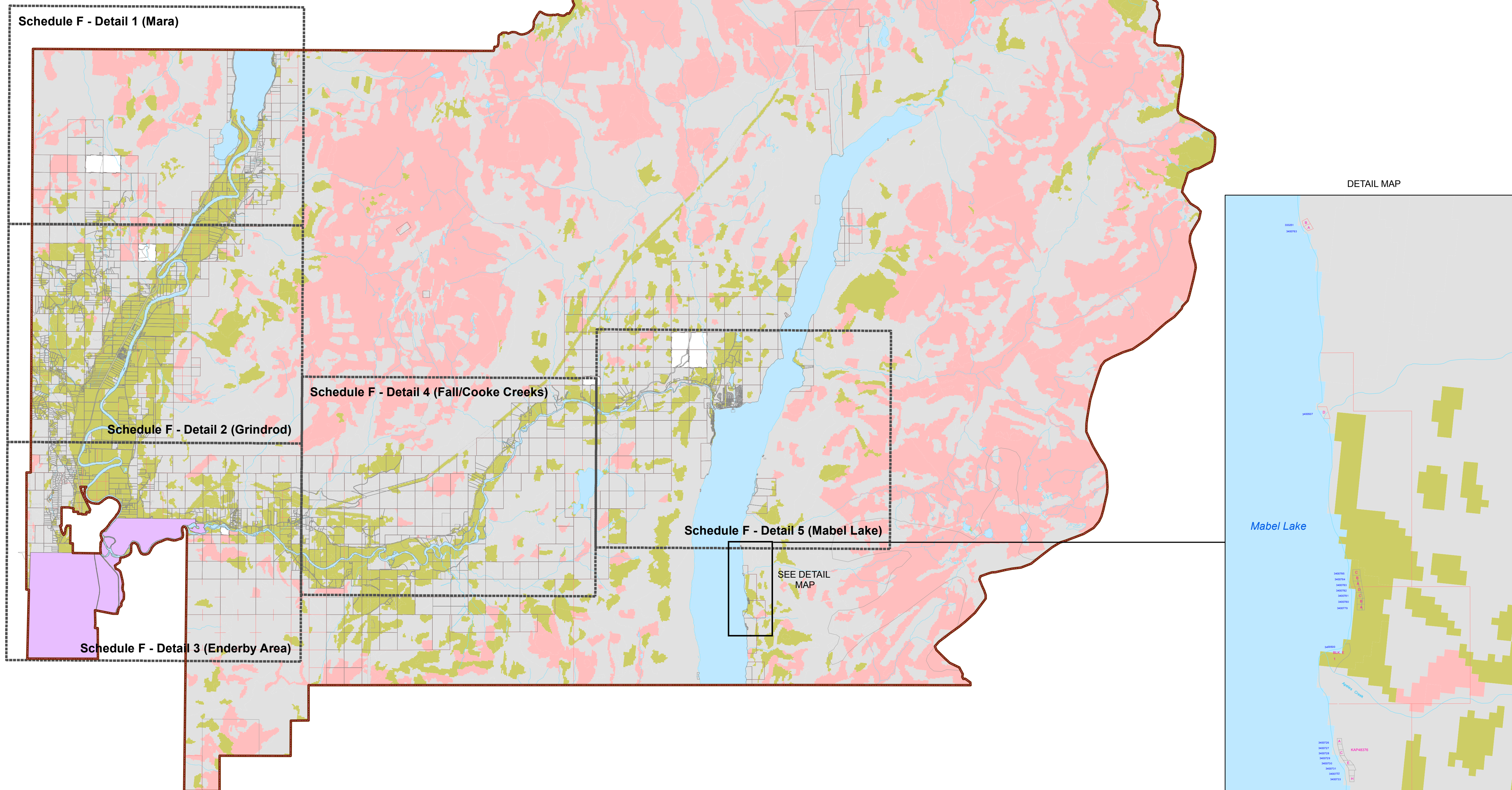
LEGEND

Wildfire Hazard Rating

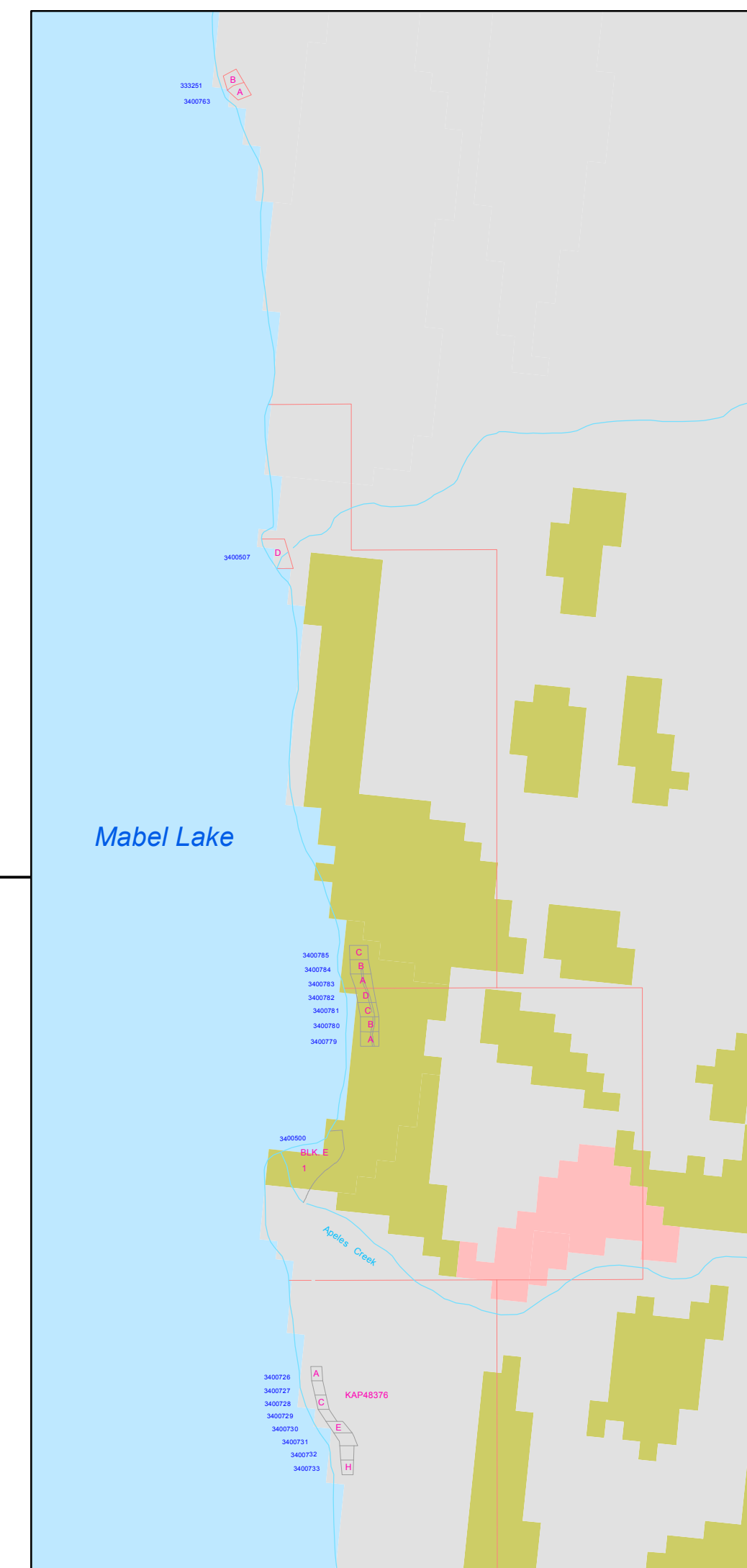
- High
 - Moderate
 - Low
 - No data
 - Water
- } Development
Permit Area

Map Sheet Boundaries

Columbia-Shuswap Regional District



DETAIL MAP



Schedule "F" to accompany Regional District of North Okanagan "Electoral Area "F" Official Community Plan Bylaw No. 2702, 2016"

I hereby certify the foregoing to be a true and correct copy of Schedule "F" attached to and forming part of Bylaw No. 2702, 2016 cited as "Electoral Area "F" Official Community Plan Bylaw No. 2702, 2016" as ADOPTED by The Board of Directors on the ___ day of _____, 2016.

Dated at Coldstream, BC this ___ day of _____, 2016.

Corporate Officer

Map based on Ministry of Forests, Lands and Natural Resource Operations, BC Wildfire Service 2015 Provincial Strategic Threat Analysis Data

1:100,000 @ 24" x 36"
0 2 4 6 Kilometers
Map Printed : * Map Produced : *

F:\RDNO_Data\GIS\