

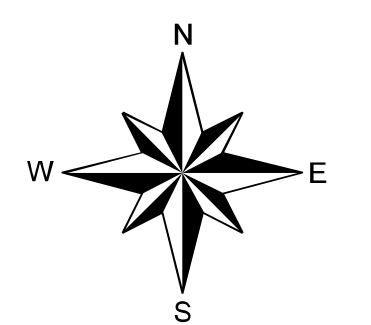
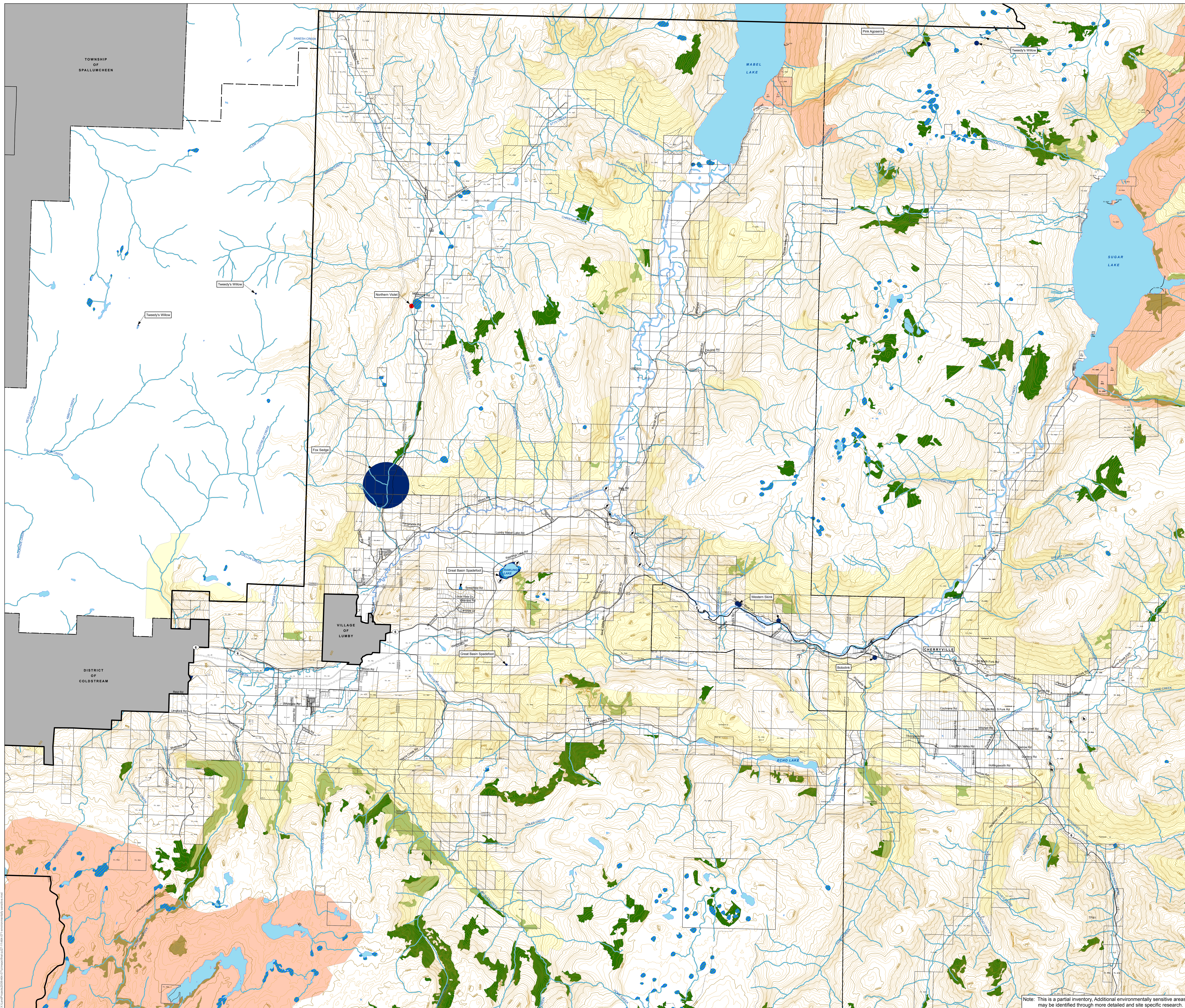


REGIONAL DISTRICT OF
NORTH OKANAGAN
ELECTORAL AREAS D & E
OFFICIAL COMMUNITY PLAN

Schedule C
Environmentally Sensitive Areas
To Accompany Official Community
Plan Bylaw No. 2485, 2011.

LEGEND

- OCP Boundary
- Electoral Areas
- Municipalities
- Riparian Areas/Watercourses
- Riparian Areas/Wetlands
- River Access
- Heritage Resource
- Archaeological Sites
- Native Rock Paintings
- Blue Listed Species & Ecosystems
- Red Listed Species & Ecosystems
- Old Growth Management Area
- Moose Winter Range
- Mule Deer Winter Range



1:50,000 @ 36"x48"
0 1,000 2,000 4,000 Meters

Note: This is a partial inventory. Additional environmentally sensitive areas may be identified through more detailed and site specific research.