



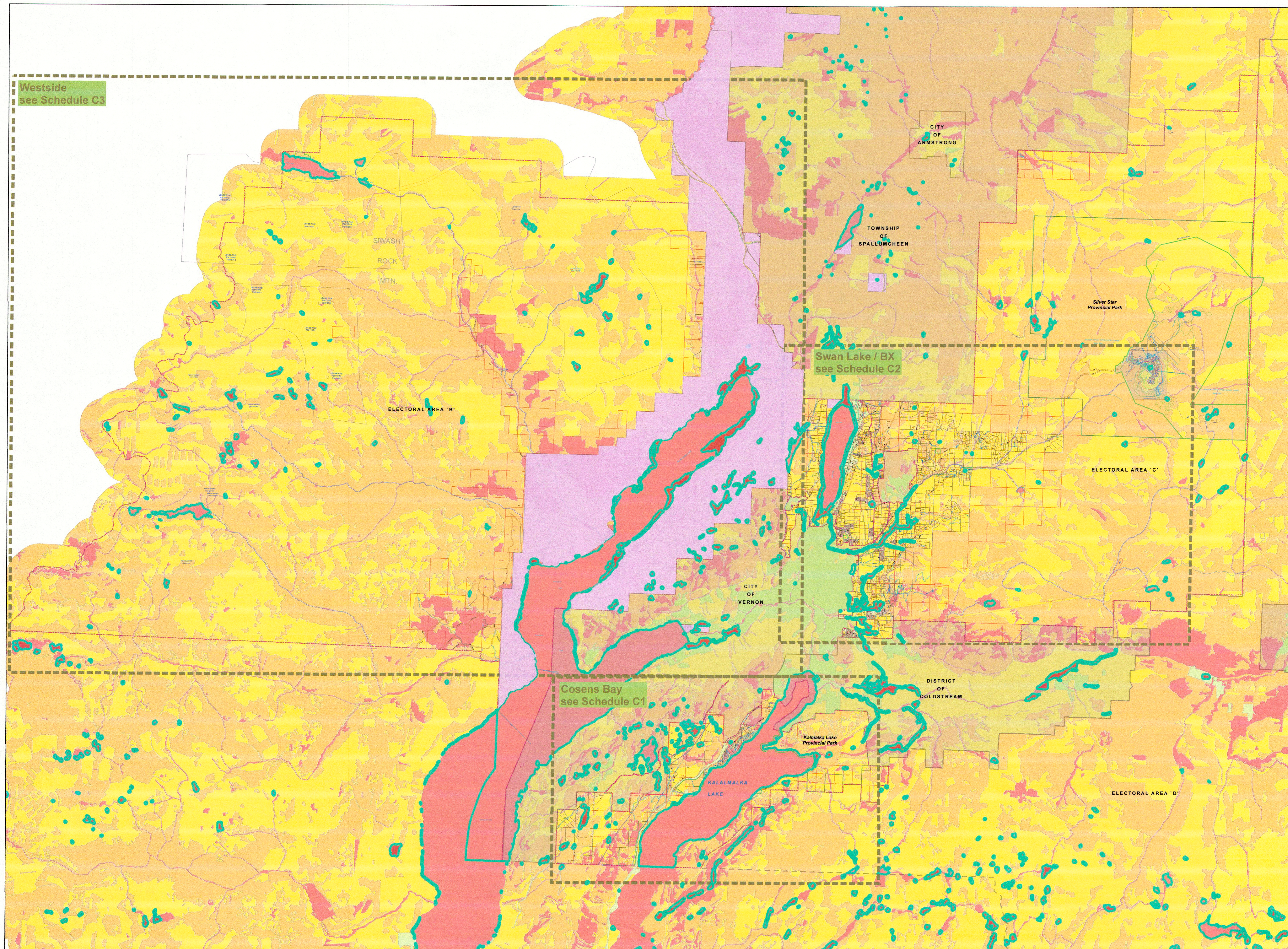
REGIONAL DISTRICT OF NORTH OKANAGAN

ELECTORAL AREAS B & C  
OFFICIAL COMMUNITY PLAN  
Schedule C  
Environmentally Sensitive Lands  
Development Permit Areas  
To Accompany Official Community  
Plan Bylaw No. 2626, 2014.

LEGEND

Conservation Ranking

- Very High
- High
- Moderate
- Low
- Wetlands
- Map Sheet Boundaries
- First Nations

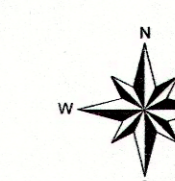


Schedule "C" to accompany Regional District of North Okanagan "Electoral Areas "B" and "C" Official Community Plan Bylaw No. 2626, 2014"

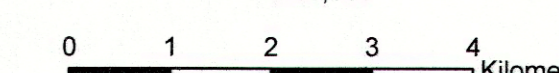
I hereby certify the foregoing to be a true and correct copy of Schedule "C" attached to and forming part of Bylaw No. 2626, 2014 cited as "Electoral Areas "B" and "C" Official Community Plan Bylaw No. 2626, 2014" as ADOPTED the Board of Directors on the 3<sup>rd</sup> day of September, 2014.

Dated at Coldstream, BC this 8<sup>th</sup> day of September, 2014.

  
Corporate Officer



1:75,000



Map Produced: September 4, 2014