



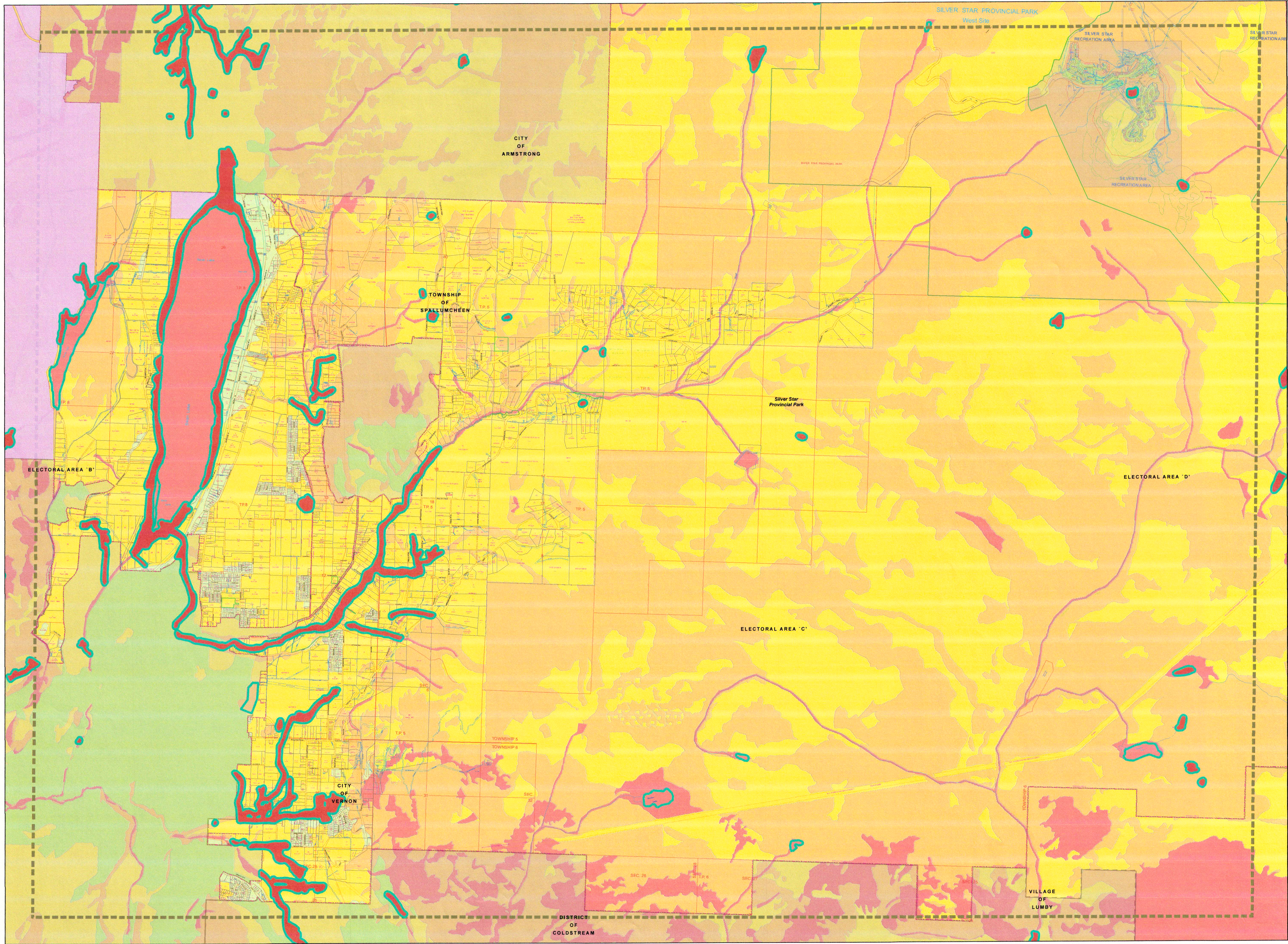
REGIONAL DISTRICT OF NORTH OKANAGAN

ELECTORAL AREAS B & C
OFFICIAL COMMUNITY PLAN
Schedule C2 - Swan Lake / BX
Environmentally Sensitive Lands
Developmental Permit Area

To Accompany Official Community
Plan Bylaw No. 2626, 2014.

LEGEND

- Conservation Ranking**
- Very High
 - High
 - Moderate
 - Low
 - Wetlands
 - Map Sheet Boundaries
 - First Nations



Schedule "C" to accompany Regional District of North Okanagan "Electoral Areas "B" and "C" Official Community Plan Bylaw No. 2626, 2014"

I hereby certify the foregoing to be a true and correct copy of Schedule "C" attached to and forming part of Bylaw No. 2626, 2014 cited as "Electoral Areas "B" and "C" Official Community Plan Bylaw No. 2626, 2014" as ADOPTED the Board of Directors on the 3rd day of September, 2014.

Dated at Coldstream, BC this 8th day of September, 2014.


Corporate Officer

