



REGIONAL DISTRICT OF NORTH OKANAGAN

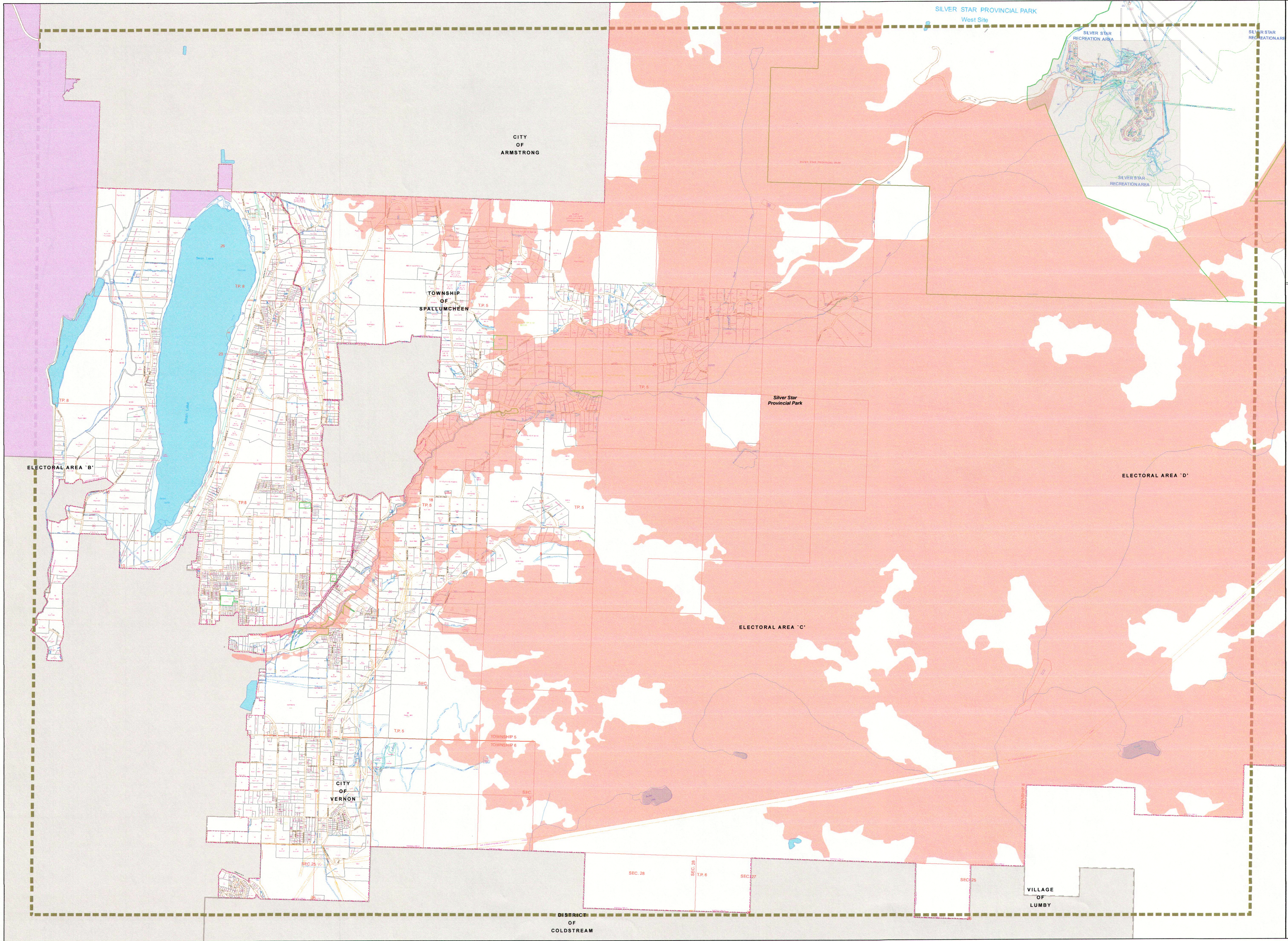
ELECTORAL AREAS B & C OFFICIAL COMMUNITY PLAN

Schedule D2 - Swan Lake / BX Wildfire Interface

To Accompany Official Community Plan Bylaw No. 2626, 2014.

LEGEND

- Wildfire Interface
- First Nations
- Map Sheet Boundaries



Schedule "D" to accompany Regional District of North Okanagan "Electoral Areas "B" and "C" Official Community Plan Bylaw No. 2626, 2014"

I hereby certify the foregoing to be a true and correct copy of Schedule "D" attached to and forming part of Bylaw No. 2626, 2014 cited as "Electoral Areas "B" and "C" Official Community Plan Bylaw No. 2626, 2014" as ADOPTED the Board of Directors on the 3<sup>rd</sup> day of September, 2014.

Dated at Coldstream, BC this 8<sup>th</sup> day of September, 2014.

*[Signature]*  
Corporate Officer

