

LEGEND

OCP Designations

- Light Industrial
- Agricultural
- Commercial
- Country Residential
- Future Residential
- Industrial
- Large Holding
- Mixed Commercial / Light Industrial
- Non Urban
- Parks
- Residential
- School
- Small Holding
- Transportation Corridor
- Resource Use
- First Nations
- ALR
- Map Sheet Boundaries

Schedule "B" to accompany Regional District of North Okanagan "Electoral Areas "B" and "C" Official Community Plan Bylaw No. 2626, 2014"

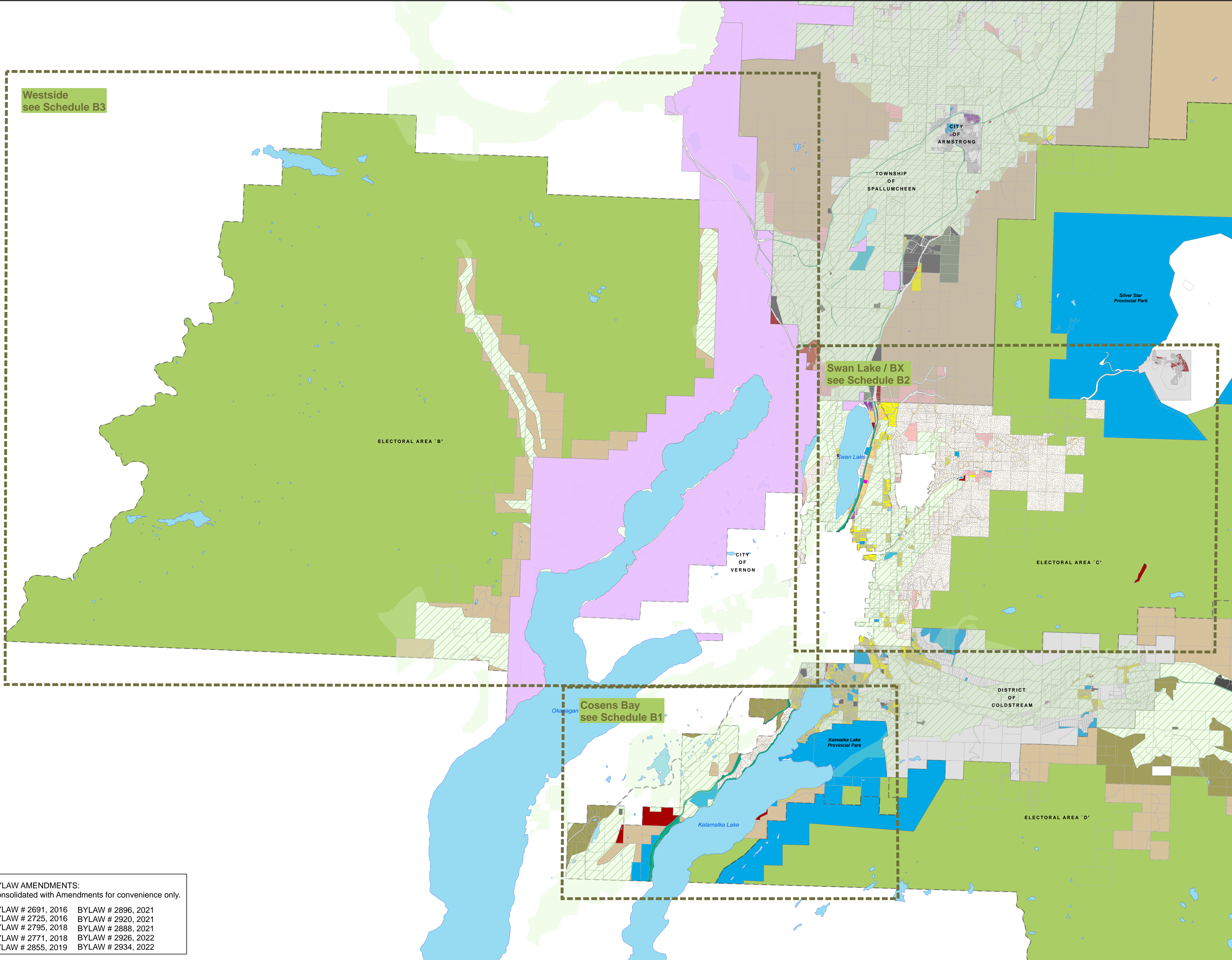
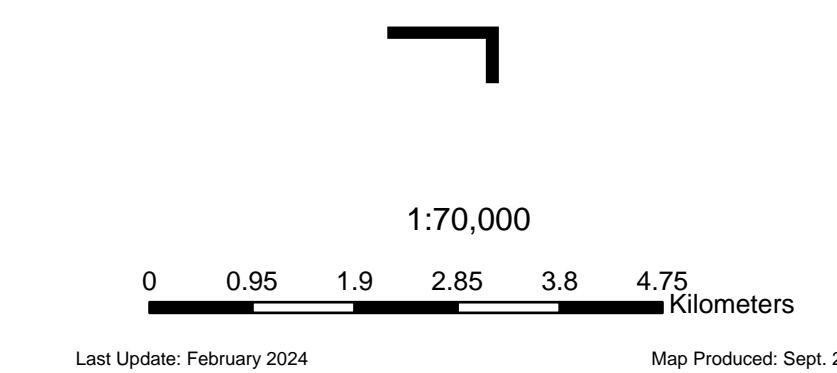
I hereby certify the foregoing to be a true and correct copy of Schedule "B" attached to and forming part of Bylaw No. 2626, 2014, cited as "Electoral Areas "B" and "C" Official Community Plan Bylaw No. 2626, 2014," as ADOPTED by the Board of Directors on the 3rd day of September, 2014.

Dated at Coldstream, BC this 8th day of September, 2014.

Corporate Officer

Note:
The Agricultural Land Use Designation is generally consistent with ALR boundaries. As this is a representation of ALR designations, refer to the maps retained by the Agricultural Land Commission for exact boundaries.

Designations within the area of Schedule B1 / B2 / B3 shown on the Schedule B are for information only. Official designation for the areas of Schedule B1 / B2 / B3 are shown on those schedules.



BYLAW AMENDMENTS:
Consolidated with Amendments for convenience only.

BYLAW # 2691, 2016	BYLAW # 2896, 2021
BYLAW # 2725, 2016	BYLAW # 2920, 2021
BYLAW # 2795, 2018	BYLAW # 2888, 2021
BYLAW # 2771, 2018	BYLAW # 2926, 2022
BYLAW # 2855, 2019	BYLAW # 2934, 2022